

RECEIVED
MILFORD TOWN CLERK
MAY 10 2023 10:24

TOWN OF MILFORD NOTICE OF HEARING

Notice is hereby given that the Milford Select Board will conduct a public hearing in Room 03, Milford Town Hall, 52 Main Street, Milford, Massachusetts on the following date and time:

Monday, April 10, 2023 at 6:00 P.M.

... on the intention of the Board to relocate and partially continue the street(s):

ROADWAY: "OLD CEDAR STREET"

DEVELOPER: Quinten Nowland and Michael Lynch
12 Prospect Street, Upton, MA 01568

STREET: Old Cedar Street – as shown on the Plan by Allen Engineering & Associates Inc., dated March 1, 2023 and on file.

Description of the proposed relocation and discontinuance of a public way, as well as maps showing same, are on file in the office of the Town Clerk, Milford Town Hall, and are available for public inspection. Interested parties should direct inquiries to the Office of the Select Board, Room 11, or the Office of Planning and Engineering, Room 05, Milford Town Hall.

All persons interested in the intention of the Board to lay out the above-named street(s) as a public way are invited to attend this hearing:

PER ORDER MILFORD SELECT BOARD
Thomas J. O'Loughlin, Chair
Michael K. Walsh
Paul A. Mazzuchelli

Date:

Cc: Town Clerk (w/description & plan)
Town Counsel (w/legal description)
Highway Surveyor
Town Engineer

Planning Board
Select Board
Developer/Fee Holder
Files

BEGINNING: At a point on the Westerly sideline of Cedar Street at the southeast corner of land now or formerly of Dilla Street Corporation as shown on the above referenced plan.

THENCE: S $02^{\circ}54'18''$ E by said Westerly sideline a distance of 87.00 feet to a point of curvature;

Thence Southwesterly on a curve to the left having a radius of 25.00 feet, an arc length of 39.27 feet to a point of tangency;

Thence: S $87^{\circ}05'42''$ W a distance of 26.98 feet to a point of curvature

Thence Northwesterly on a curve to the right having a radius of 125.00 feet, an arc length of 138.00 feet to a point of concentric curvature;

Thence Northwesterly on a curve to the right having a radius of 665.00 feet, an arc length of 330.12 feet to a point of tangency;

Thence: N $01^{\circ}12'36''$ W a distance of 638.10 feet to a point on the Southerly sideline of Interstate Route 495;

Thence: S $49^{\circ}16'32''$ E a distance of 140.03 feet to a point;

Thence: S $01^{\circ}12'36''$ E a distance of 30.44 feet to a point of curvature;

Thence Southerly on a curve to the right having a radius of 52.00 feet, an arc length of 47.81 feet to a point of tangency;

Thence: S $51^{\circ}28'10''$ W a distance of 42.37 feet to a point;

Thence: S $01^{\circ}12'36''$ E a distance of 447.04 feet to a point of curvature;

Thence Southeasterly on a curve to the left having a radius of 615.00, an arc length of 330.66 feet to a point;

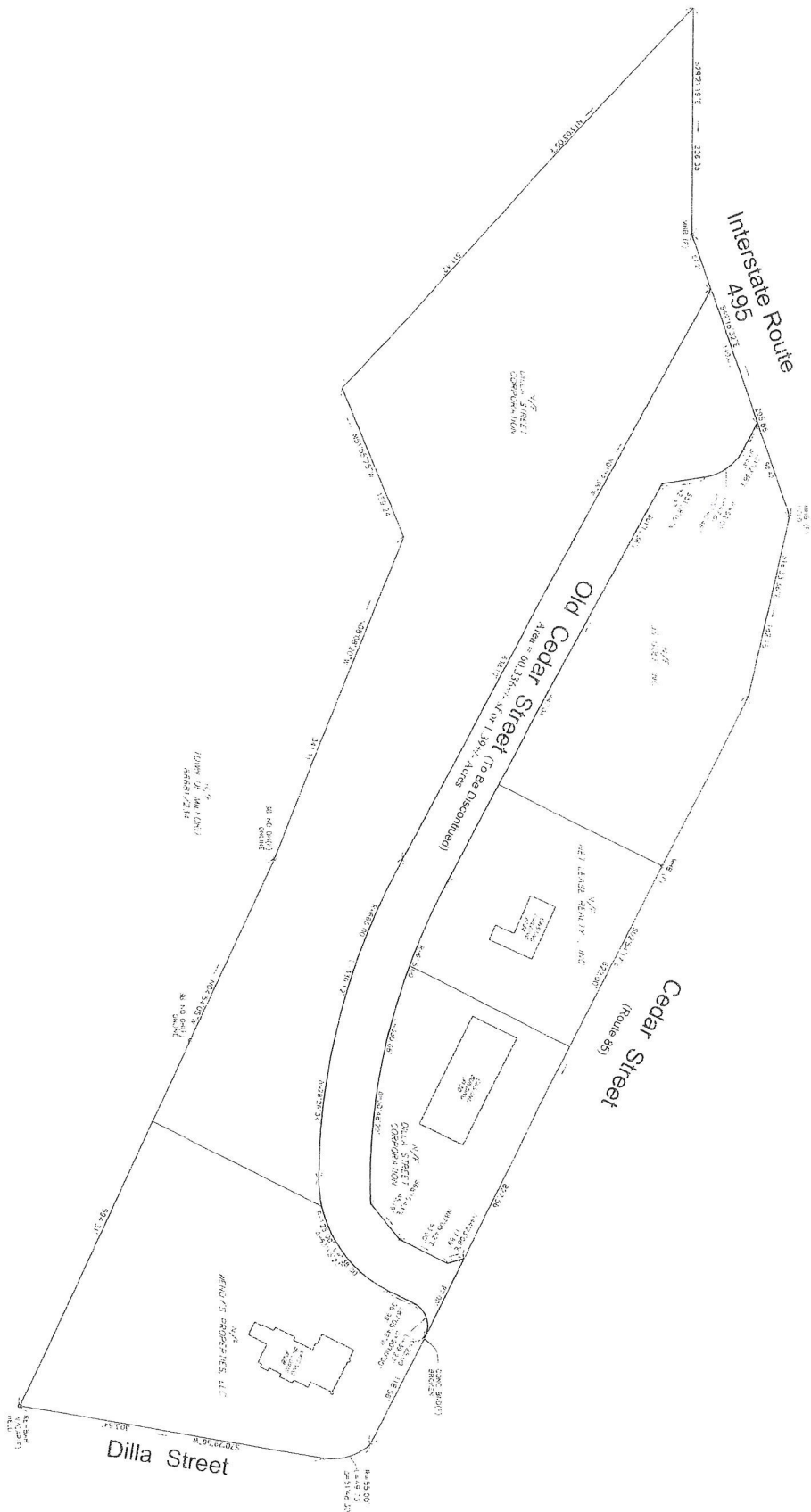
Thence: S $68^{\circ}15'43''$ E a distance of 45.19 feet to a point;

Thence: N $87^{\circ}05'42''$ E a distance of 53.19 feet to a point;

Thence: N $44^{\circ}23'08''$ E a distance of 17.69 feet the point of beginning

The above described area of proposed discontinuance being 60,336+/- sf or 1.39+/- Acres

(Quentin Nowland & Michael Lynch)



LEGEND

44700001
 44700002
 44700003
 44700004
 44700005
 44700006
 44700007
 44700008
 44700009
 44700010
 44700011
 44700012
 44700013
 44700014
 44700015
 44700016
 44700017
 44700018
 44700019
 44700020
 44700021
 44700022
 44700023
 44700024
 44700025
 44700026
 44700027
 44700028
 44700029
 44700030
 44700031
 44700032
 44700033
 44700034
 44700035
 44700036
 44700037
 44700038
 44700039
 44700040
 44700041
 44700042
 44700043
 44700044
 44700045
 44700046
 44700047
 44700048
 44700049
 44700050
 44700051
 44700052
 44700053
 44700054
 44700055
 44700056
 44700057
 44700058
 44700059
 44700060
 44700061
 44700062
 44700063
 44700064
 44700065
 44700066
 44700067
 44700068
 44700069
 44700070
 44700071
 44700072
 44700073
 44700074
 44700075
 44700076
 44700077
 44700078
 44700079
 44700080
 44700081
 44700082
 44700083
 44700084
 44700085
 44700086
 44700087
 44700088
 44700089
 44700090
 44700091
 44700092
 44700093
 44700094
 44700095
 44700096
 44700097
 44700098
 44700099
 44700100
 44700101
 44700102
 44700103
 44700104
 44700105
 44700106
 44700107
 44700108
 44700109
 44700110
 44700111
 44700112
 44700113
 44700114
 44700115
 44700116
 44700117
 44700118
 44700119
 44700120
 44700121
 44700122
 44700123
 44700124
 44700125
 44700126
 44700127
 44700128
 44700129
 44700130
 44700131
 44700132
 44700133
 44700134
 44700135
 44700136
 44700137
 44700138
 44700139
 44700140
 44700141
 44700142
 44700143
 44700144
 44700145
 44700146
 44700147
 44700148
 44700149
 44700150
 44700151
 44700152
 44700153
 44700154
 44700155
 44700156
 44700157
 44700158
 44700159
 44700160
 44700161
 44700162
 44700163
 44700164
 44700165
 44700166
 44700167
 44700168
 44700169
 44700170
 44700171
 44700172
 44700173
 44700174
 44700175
 44700176
 44700177
 44700178
 44700179
 44700180
 44700181
 44700182
 44700183
 44700184
 44700185
 44700186
 44700187
 44700188
 44700189
 44700190
 44700191
 44700192
 44700193
 44700194
 44700195
 44700196
 44700197
 44700198
 44700199
 44700200
 44700201
 44700202
 44700203
 44700204
 44700205
 44700206
 44700207
 44700208
 44700209
 44700210
 44700211
 44700212
 44700213
 44700214
 44700215
 44700216
 44700217
 44700218
 44700219
 44700220
 44700221
 44700222
 44700223
 44700224
 44700225
 44700226
 44700227
 44700228
 44700229
 44700230
 44700231
 44700232
 44700233
 44700234
 44700235
 44700236
 44700237
 44700238
 44700239
 44700240
 44700241
 44700242
 44700243
 44700244
 44700245
 44700246
 44700247
 44700248
 44700249
 44700250
 44700251
 44700252
 44700253
 44700254
 44700255
 44700256
 44700257
 44700258
 44700259
 44700260
 44700261
 44700262
 44700263
 44700264
 44700265
 44700266
 44700267
 44700268
 44700269
 44700270
 44700271
 44700272
 44700273
 44700274
 44700275
 44700276
 44700277
 44700278
 44700279
 44700280
 44700281
 44700282
 44700283
 44700284
 44700285
 44700286
 44700287
 44700288
 44700289
 44700290
 44700291
 44700292
 44700293
 44700294
 44700295
 44700296
 44700297
 44700298
 44700299
 44700300
 44700301
 44700302
 44700303
 44700304
 44700305
 44700306
 44700307
 44700308
 44700309
 44700310
 44700311
 44700312
 44700313
 44700314
 44700315

Order: 95 / 492107, AN 70

Dilla Street Corporation
Wendy's Properties, LLC
NET Lease Realty, LLC
JS Golf, Inc

DISCONTINUANCE
PLAN

Old Cedar Street
Milford, MA 01757



2025 School Year



**ALLEN ENGINEERING
& ASSOCIATES, INC.**
Civil Engineers • Surveyor
Land Development Consultants
140 Highland Avenue East
Beverly Hills, CA 91292 • Phone
(310) 281-3212 • Telex
256551

1734 cm.⁻¹ SCa²⁺

March 1, 2023

[illegible]

DOI: 10.1002/jbm.b.a

64577 ON 305

100

