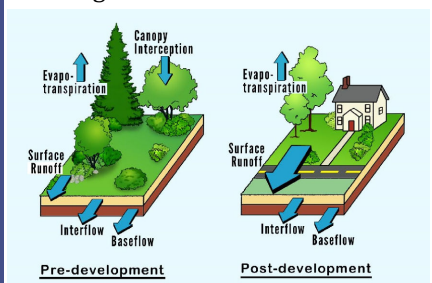




What Is Stormwater?

Stormwater is rainwater and snow melt that runs off buildings, streets, and lawns and carries dirt, oil, trash and other pollutants into the storm drains. This runoff is discharged into local streams and rivers. It is estimated that over 60% of water pollution comes from stormwater discharge.



What Is The Problem?

Like many towns in Massachusetts, the Town of Milford faces significant stormwater challenges through development, which disrupts the natural water cycle. Rainfall, which used to be naturally absorbed where it fell by plants and soil, is now entering local waterways and eventually the Charles River as stormwater runoff.



mandated water quality requirements and for properly managing the valuable stormwater infrastructure in each community.

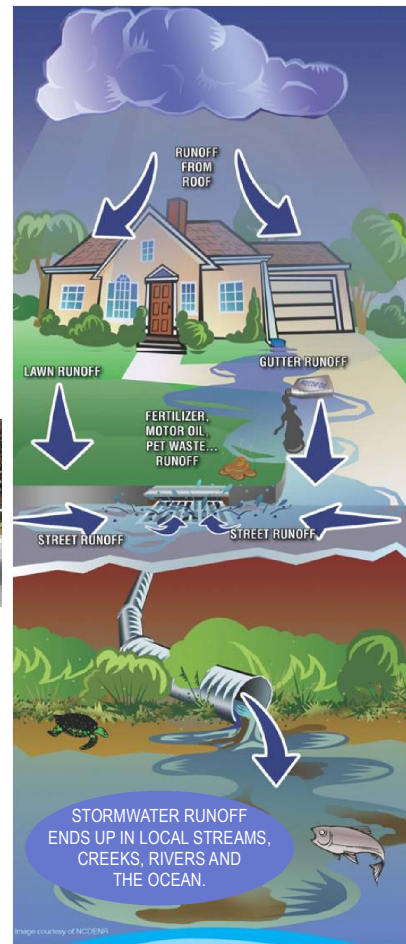


What Is Milford Doing?

Milford is partnering with Franklin and Medway to explore the feasibility of managing stormwater together. The goal is to find ways to share and minimize costs for complying with

Did You Know?

- Milford has 85 miles of drainage pipes throughout town and 3,417 catch basins.
- Milford disposes of 350+ tons of sediment and trash every year from catch basin cleaning and street sweeping.
- The Highway Department sweeps every street at least twice a year, removing sediment and debris which would otherwise find its way into local streams and waterways.





The Upper Charles River Regional Feasibility Study

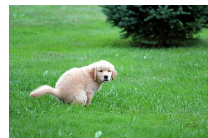
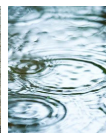
Identifying Solutions for Efficient Stormwater Management!



TOWN OF MILFORD

What Can Residents Do To Prevent Stormwater Pollution?

- **Pick up the poop!** Dog waste carries high levels of harmful E. coli bacteria and is a major contributor to local water pollution.
- **NEVER** dump anything down storm drains. Take unwanted chemicals and paint to a hazardous waste collection site.
- Direct downspouts away from paved surfaces.
- Prevent irrigation systems from spraying water onto pavement. Water that ends up on pavement contributes to polluted runoff and is wasted.
- Don't pile yard waste near streams, wetlands or storm drains.
- Start a compost pile.
- Use fertilizers sparingly and sweep up driveways, sidewalks and roads.
- Use a rain barrel to collect rain water for lawn and garden watering.
- Never use a hose to wash down the driveway or sidewalk. This washes pollutants into storm drains and is a waste of water.



- Collect all used oil, antifreeze and other vehicle fluids in containers with tight fitting lids and recycle at a local service station.
- Avoid over salting walkways and driveways in the winter and use non-toxic products whenever possible.
- When washing vehicles, park in a spot where the soap will run off onto the grass rather than into the street and down the storm drain.
- Never clean or pressure wash the undercarriage of a car at home. The oil, grease and other pollutants from this activity can contaminate shallow groundwater.

Thank you for caring about Stormwater in Milford!

LEARN MORE!

Interested in learning more about stormwater challenges and how they may affect you? Attend the next public forum!

May 15, 2018

6-7:30 pm | Franklin Municipal Building
355 East Central St, Franklin MA 02038

May 23, 2018

6-7:30 pm | Franklin Municipal Building
355 East Central St, Franklin MA 02038

For more information on Milford's Stormwater Management Program:

Scott Crisafulli, Highway Surveyor | Mike Dean, Town Engineer
e | scrisafulli@townofmilford.com | mdean@townofmilford.com
p | 508.473.1274 | 508.634.2317
w | www.townofmilford.gov/planning-engineering

