

The Commonwealth of Massachusetts

STATE PRIMARY DEMOCRATIC PARTY

MILFORD

William Francis Galvin
SECRETARY OF THE
COMMONWEALTH OF MASSACHUSETTS

OFFICIAL ABSENTEE BALLOT

SAMPLE BALLOT

2074/2071

Tuesday, September 4, 2018

To vote for a candidate, fill in the oval to the right of the candidate's name. To vote for a person not on the ballot, write the person's name and residence in the blank space provided and fill in the oval.

SENATOR IN CONGRESS

Vote for ONE

ELIZABETH A. WARREN 24 Linnaean St., Cambridge +
United States Senator

DO NOT VOTE IN THIS SPACE.
USE BLANK LINE BELOW FOR WRITE-IN.

WRITE-IN SPACE ONLY

GOVERNOR

Vote for ONE

JAY M. GONZALEZ 62 Putnam St., Needham +++++
Former Secretary of Administration and Finance

BOB MASSIE 140 Sycamore St., Somerville ++++++

DO NOT VOTE IN THIS SPACE.
USE BLANK LINE BELOW FOR WRITE-IN.

WRITE-IN SPACE ONLY

LIEUTENANT GOVERNOR

Vote for ONE

QUENTIN PALFREY 683 Boston Post Rd., Weston+++
Former Assistant Attorney General

JIMMY TINGLE 27 Lawrence St., Cambridge ++++++

DO NOT VOTE IN THIS SPACE.
USE BLANK LINE BELOW FOR WRITE-IN.

WRITE-IN SPACE ONLY

ATTORNEY GENERAL

Vote for ONE

MAURA HEALEY 40 Winthrop St., Boston ++++++

DO NOT VOTE IN THIS SPACE.
USE BLANK LINE BELOW FOR WRITE-IN.

WRITE-IN SPACE ONLY

SECRETARY OF STATE

Vote for ONE

WILLIAM FRANCIS GALVIN 46 Lake St., Boston +
Present State Secretary; Candidate for Re-nomination

JOSH ZAKIM 177 Commonwealth Ave., Boston ++++++
Current Boston City Councilor

DO NOT VOTE IN THIS SPACE.
USE BLANK LINE BELOW FOR WRITE-IN.

WRITE-IN SPACE ONLY

SAMPLE BALLOT

TREASURER

Vote for ONE

DEBORAH B. GOLDBERG 37 Hyslop Rd., Brookline++
Present Treasurer; Candidate for Re-nomination

DO NOT VOTE IN THIS SPACE.
USE BLANK LINE BELOW FOR WRITE-IN.

WRITE-IN SPACE ONLY

AUDITOR

Vote for ONE

SUZANNE M. BUMP 6 Hoe Shop St., Easton ++++++

Present State Auditor; Candidate for Re-nomination

DO NOT VOTE IN THIS SPACE.
USE BLANK LINE BELOW FOR WRITE-IN.

WRITE-IN SPACE ONLY

REPRESENTATIVE IN CONGRESS

FOURTH DISTRICT Vote for ONE

JOSEPH P. KENNEDY, III 106 Waban Hill Rd., Newton

Candidate for Re-nomination

GARY J. RUCINSKI 40 Clearwater Rd., Newton +++++

DO NOT VOTE IN THIS SPACE.
USE BLANK LINE BELOW FOR WRITE-IN.

WRITE-IN SPACE ONLY

COUNCILLOR

SEVENTH DISTRICT Vote for ONE

PAUL M. DePALO 7 Underwood St., Worcester+++++

Worcester Planning Board Member

DO NOT VOTE IN THIS SPACE.
USE BLANK LINE BELOW FOR WRITE-IN.

WRITE-IN SPACE ONLY

SENATOR IN GENERAL COURT

WORCESTER & NORFOLK DISTRICT Vote for ONE

THOMAS M. MEROLLI 52 Millville St., Mendon ++

DO NOT VOTE IN THIS SPACE.
USE BLANK LINE BELOW FOR WRITE-IN.

WRITE-IN SPACE ONLY

SAMPLE BALLOT

REPRESENTATIVE IN GENERAL COURT

TENTH WORCESTER DISTRICT Vote for ONE

BRIAN W. MURRAY 23 Congress Ter., Milford ++++

DO NOT VOTE IN THIS SPACE.
USE BLANK LINE BELOW FOR WRITE-IN.

WRITE-IN SPACE ONLY

DISTRICT ATTORNEY

MIDDLE DISTRICT Vote for ONE

JOSEPH D. EARLY, JR. 36 Blackthorn Dr., Worcester +
Present District Attorney; Candidate for Re-nomination

DO NOT VOTE IN THIS SPACE.
USE BLANK LINE BELOW FOR WRITE-IN.

WRITE-IN SPACE ONLY

CLERK OF COURTS

WORCESTER COUNTY Vote for ONE

DENNIS P. McMANUS 5 Olde Century Farm Rd., West Boylston

Present Clerk of Courts; Former Assistant District Attorney

DO NOT VOTE IN THIS SPACE.
USE BLANK LINE BELOW FOR WRITE-IN.

WRITE-IN SPACE ONLY

REGISTER OF DEEDS

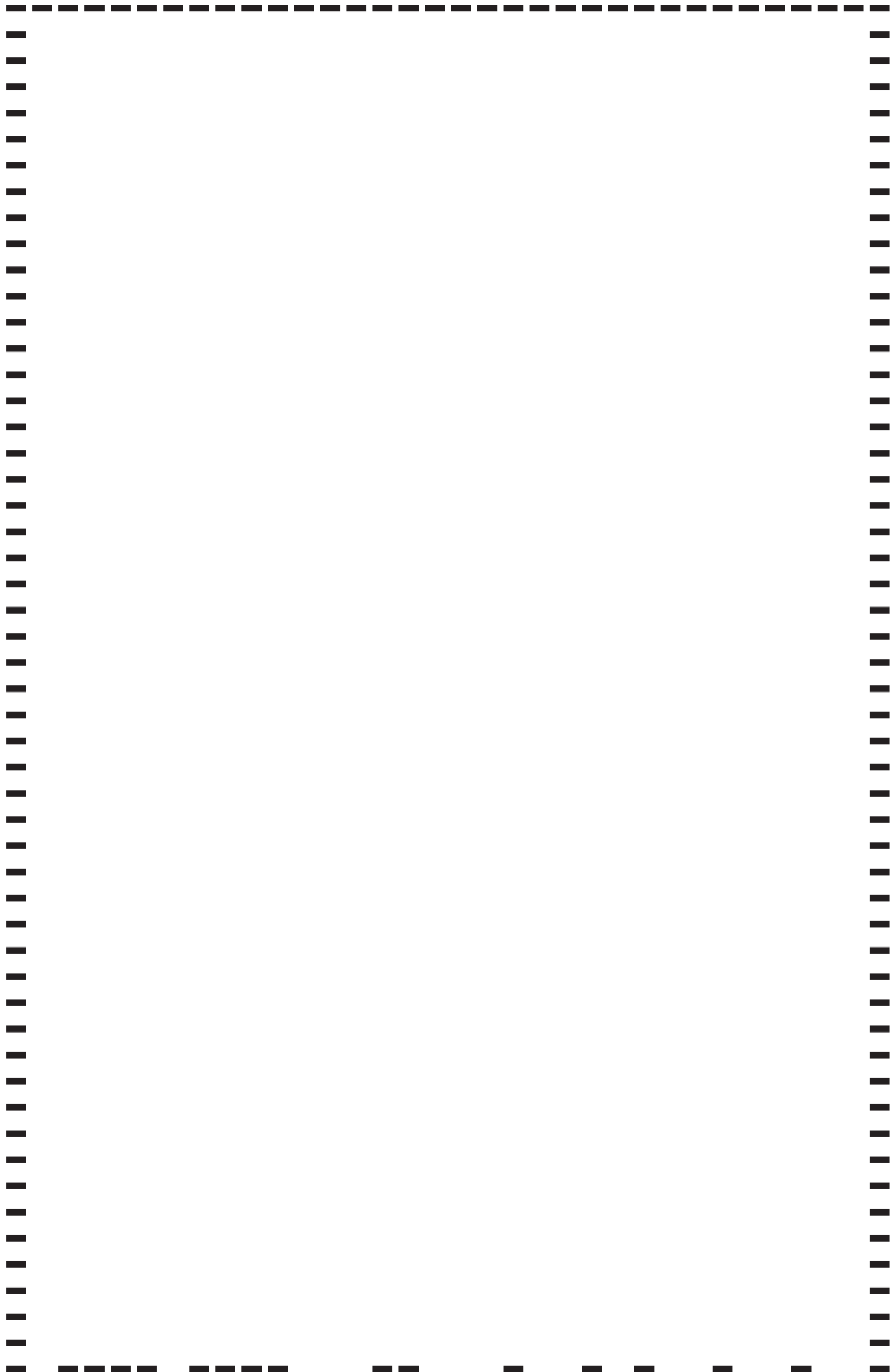
WORCESTER DISTRICT Vote for ONE

KATHRYN A. TOOMEY 27 Keach Ave., Worcester ++

DO NOT VOTE IN THIS SPACE.
USE BLANK LINE BELOW FOR WRITE-IN.

WRITE-IN SPACE ONLY

SAMPLE BALLOT



The Commonwealth of Massachusetts

STATE PRIMARY LIBERTARIAN PARTY

MILFORD

William Francis Galvin
SECRETARY OF THE
COMMONWEALTH OF MASSACHUSETTS

OFFICIAL ABSENTEE BALLOT

SAMPLE BALLOT

2074/2071

Tuesday, September 4, 2018

To vote for a candidate, fill in the oval to the right of the candidate's name. To vote for a person not on the ballot, write the person's name and residence in the blank space provided and fill in the oval.

SENATOR IN CONGRESS

*** **Vote for ONE**

WRITE-IN SPACE ONLY

GOVERNOR

*** **Vote for ONE**

WRITE-IN SPACE ONLY

LIEUTENANT GOVERNOR

*** **Vote for ONE**

WRITE-IN SPACE ONLY

ATTORNEY GENERAL

*** **Vote for ONE**

WRITE-IN SPACE ONLY

SECRETARY OF STATE

*** **Vote for ONE**

WRITE-IN SPACE ONLY

TREASURER

*** **Vote for ONE**

WRITE-IN SPACE ONLY

AUDITOR

*** **Vote for ONE**

DANIEL FISHMAN 36 Colgate Rd., Beverly ***

DO NOT VOTE IN THIS SPACE.
USE BLANK LINE BELOW FOR WRITE-IN.

WRITE-IN SPACE ONLY

REPRESENTATIVE IN CONGRESS

FOURTH DISTRICT *** **Vote for ONE**

WRITE-IN SPACE ONLY

COUNCILLOR

SEVENTH DISTRICT *** **Vote for ONE**

WRITE-IN SPACE ONLY

SENATOR IN GENERAL COURT

WORCESTER & NORFOLK DISTRICT *** **Vote for ONE**

WRITE-IN SPACE ONLY

REPRESENTATIVE IN GENERAL COURT

TENTH WORCESTER DISTRICT *** **Vote for ONE**

WRITE-IN SPACE ONLY

DISTRICT ATTORNEY

MIDDLE DISTRICT *** **Vote for ONE**

WRITE-IN SPACE ONLY

CLERK OF COURTS

WORCESTER COUNTY *** **Vote for ONE**

WRITE-IN SPACE ONLY

REGISTER OF DEEDS

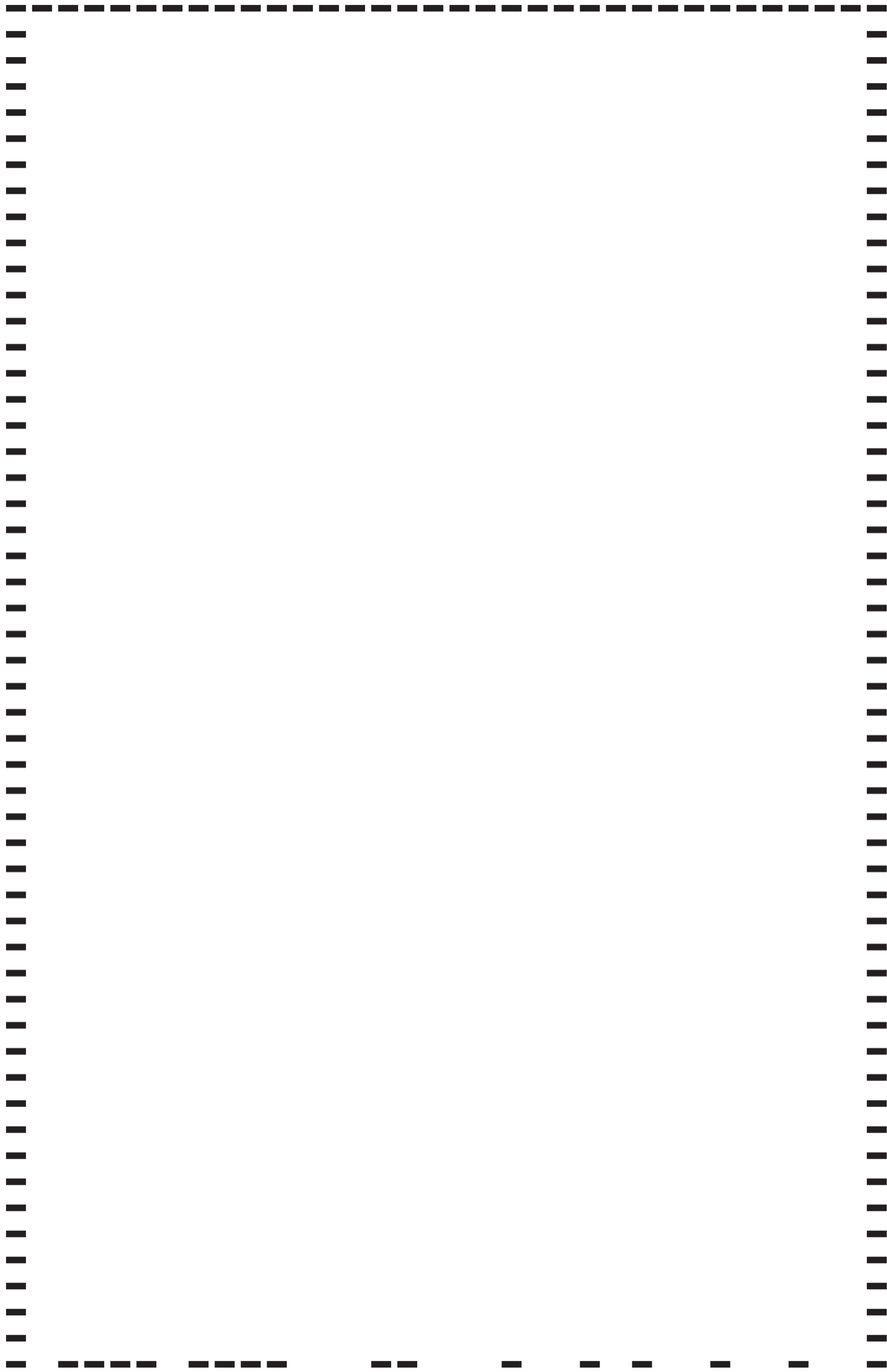
WORCESTER DISTRICT *** **Vote for ONE**

WRITE-IN SPACE ONLY

SAMPLE BALLOT

SAMPLE BALLOT

SAMPLE BALLOT



The Commonwealth of Massachusetts

STATE PRIMARY REPUBLICAN PARTY

MILFORD

William Francis Galvin
SECRETARY OF THE
COMMONWEALTH OF MASSACHUSETTS

OFFICIAL ABSENTEE BALLOT

SAMPLE BALLOT

2074/2071

Tuesday, September 4, 2018

To vote for a candidate, fill in the oval to the right of the candidate's name. To vote for a person not on the ballot, write the person's name and residence in the blank space provided and fill in the oval.

SENATOR IN CONGRESS

Vote for ONE

GEOFF DIEHL 10 Village Way, Whitman ☆☆☆☆☆
Current State Representative

JOHN KINGSTON 16 Chestnut St., Winchester ☆☆

BETH JOYCE LINDSTROM 161 Wharton Row, Groton
Former Director of Consumer Affairs and Business Regulation

DO NOT VOTE IN THIS SPACE.
USE BLANK LINE BELOW FOR WRITE-IN.

WRITE-IN SPACE ONLY

GOVERNOR

Vote for ONE

CHARLES D. BAKER 49 Monument Ave., Swampscott
Governor of Massachusetts

SCOTT D. LIVELY 453 State St., Springfield ☆☆☆☆

DO NOT VOTE IN THIS SPACE.
USE BLANK LINE BELOW FOR WRITE-IN.

WRITE-IN SPACE ONLY

LIEUTENANT GOVERNOR

Vote for ONE

KARYN E. POLITO 2 Tatassit Cir., Shrewsbury ☆☆

Lieutenant Governor of Massachusetts

DO NOT VOTE IN THIS SPACE.
USE BLANK LINE BELOW FOR WRITE-IN.

WRITE-IN SPACE ONLY

ATTORNEY GENERAL

Vote for ONE

JAMES R. McMAHON, III 14 Canal View Rd., Bourne

DANIEL L. SHORES 2706 Hockley Dr., Hingham ☆

DO NOT VOTE IN THIS SPACE.
USE BLANK LINE BELOW FOR WRITE-IN.

WRITE-IN SPACE ONLY

SECRETARY OF STATE

Vote for ONE

ANTHONY M. AMORE 182 Norfolk Ave., Swampscott

DO NOT VOTE IN THIS SPACE.
USE BLANK LINE BELOW FOR WRITE-IN.

WRITE-IN SPACE ONLY

SAMPLE BALLOT

TREASURER

Vote for ONE

KEIKO M. ORRALL 120 Crooked Ln., Lakeville ☆☆

Current State Representative

DO NOT VOTE IN THIS SPACE.
USE BLANK LINE BELOW FOR WRITE-IN.

WRITE-IN SPACE ONLY

AUDITOR

Vote for ONE

HELEN BRADY 1630 Monument St., Concord ☆☆☆

DO NOT VOTE IN THIS SPACE.
USE BLANK LINE BELOW FOR WRITE-IN.

WRITE-IN SPACE ONLY

REPRESENTATIVE IN CONGRESS

Vote for ONE

FOURTH DISTRICT ☆☆☆

WRITE-IN SPACE ONLY

COUNCILLOR

Vote for ONE

SEVENTH DISTRICT
JENNIE L. CAISSIE 53 Fort Hill Rd., Oxford ☆☆☆

DO NOT VOTE IN THIS SPACE.
USE BLANK LINE BELOW FOR WRITE-IN.

WRITE-IN SPACE ONLY

SENATOR IN GENERAL COURT

Vote for ONE

WORCESTER & NORFOLK DISTRICT
RYAN C. FATTMAN 5 Maple Ln., Sutton ☆☆☆☆

DO NOT VOTE IN THIS SPACE.
USE BLANK LINE BELOW FOR WRITE-IN.

WRITE-IN SPACE ONLY

SAMPLE BALLOT

REPRESENTATIVE IN GENERAL COURT

Vote for ONE

TENTH WORCESTER DISTRICT
SANDRA E. SLATTERY BIAGETTI 139 Dutcher St., Hopedale
Zoning Board Member; Former Selectman, School Committee Member

DO NOT VOTE IN THIS SPACE.
USE BLANK LINE BELOW FOR WRITE-IN.

WRITE-IN SPACE ONLY

DISTRICT ATTORNEY

Vote for ONE

MIDDLE DISTRICT ☆☆☆

WRITE-IN SPACE ONLY

CLERK OF COURTS

Vote for ONE

WORCESTER COUNTY
JOANNE E. POWELL 15 Dodge Ln., Charlton ☆☆

DO NOT VOTE IN THIS SPACE.
USE BLANK LINE BELOW FOR WRITE-IN.

WRITE-IN SPACE ONLY

REGISTER OF DEEDS

Vote for ONE

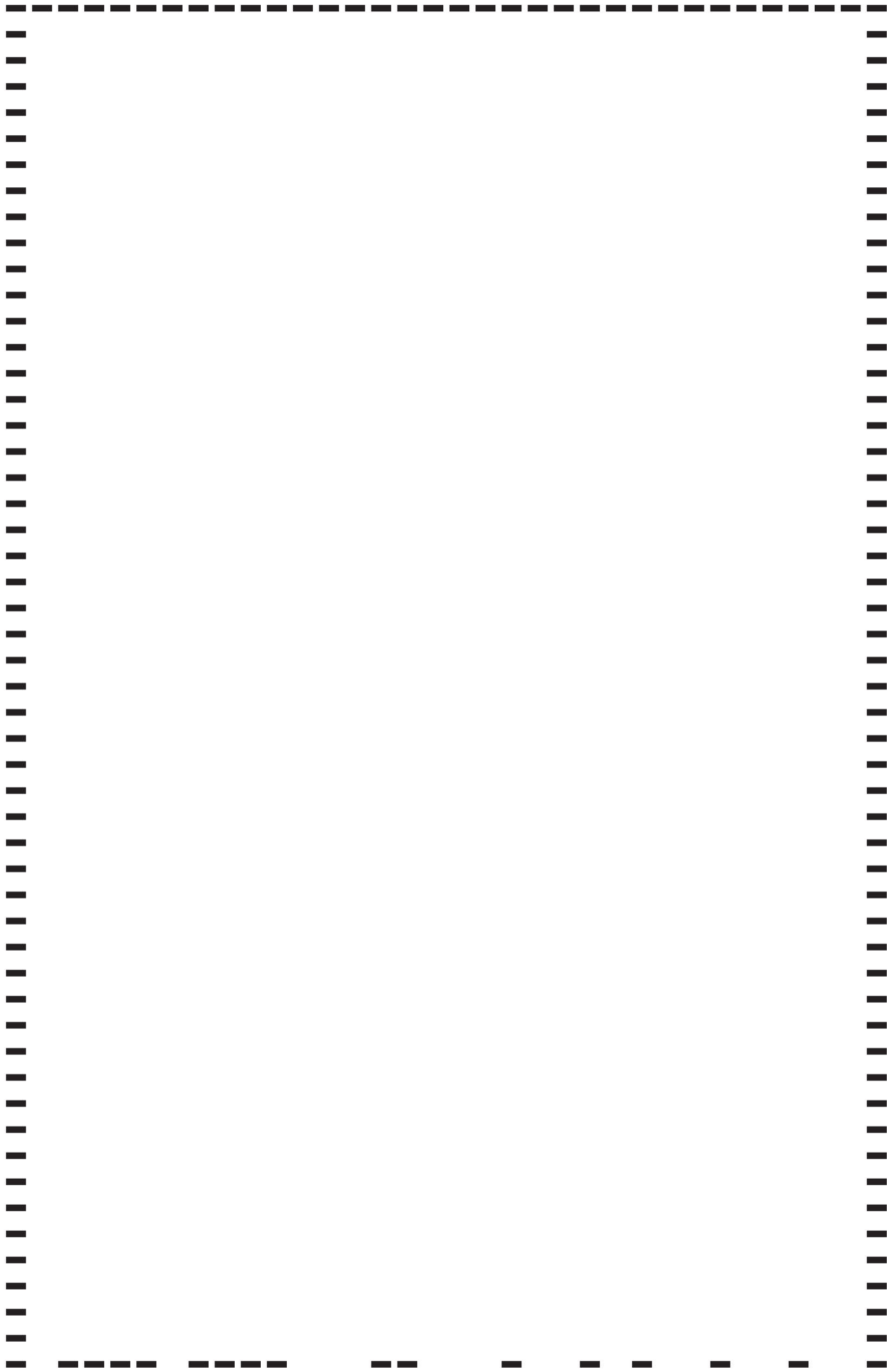
WORCESTER DISTRICT
KATE D. CAMPANALE 1511 Main St., Worcester ☆
Current State Representative

KEVIN J. KUROS 18 Yankee's Way, Uxbridge ☆☆☆
Current State Representative

DO NOT VOTE IN THIS SPACE.
USE BLANK LINE BELOW FOR WRITE-IN.

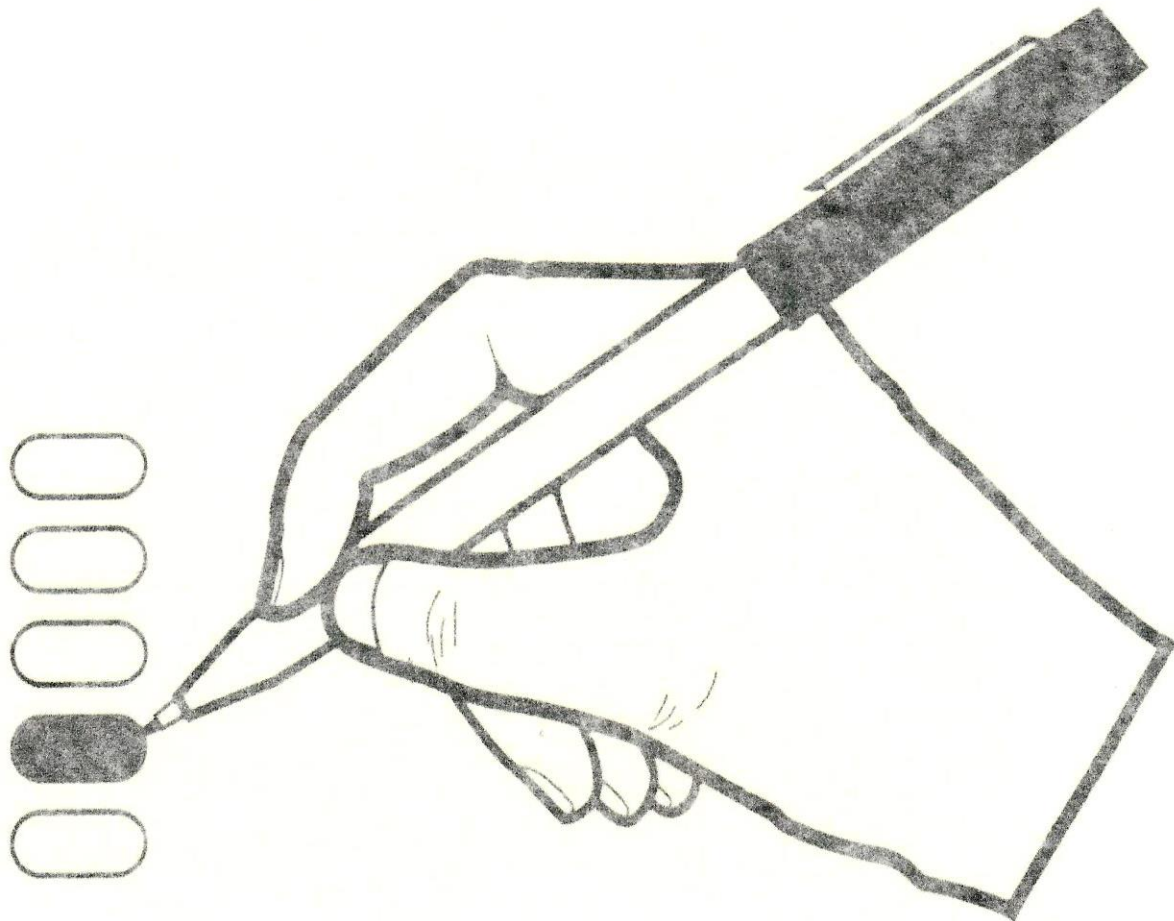
WRITE-IN SPACE ONLY

SAMPLE BALLOT



VOTING INSTRUCTIONS

TO VOTE,
BLACKEN
THE OVAL
COMPLETELY



AFTER VOTING, PLACE BALLOT IN
SECRECY SLEEVE IN THIS DIRECTION

DO NOT FOLD THE BALLOT

USE ONLY THE SPECIAL PEN PROVIDED

IF YOU MAKE AN ERROR
PLEASE RETURN YOUR BALLOT TO THE ELECTION OFFICIAL
AND REQUEST A NEW BALLOT